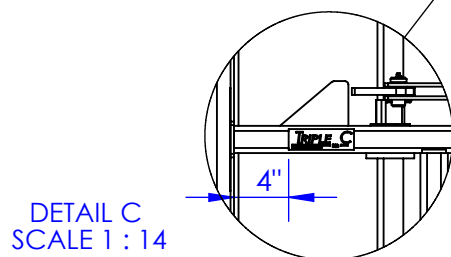
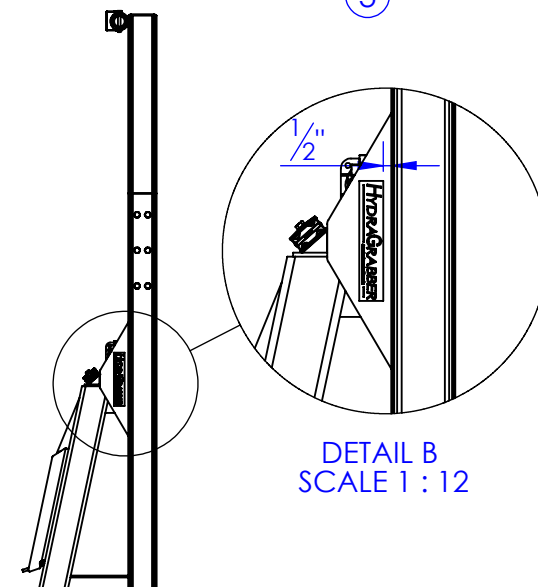
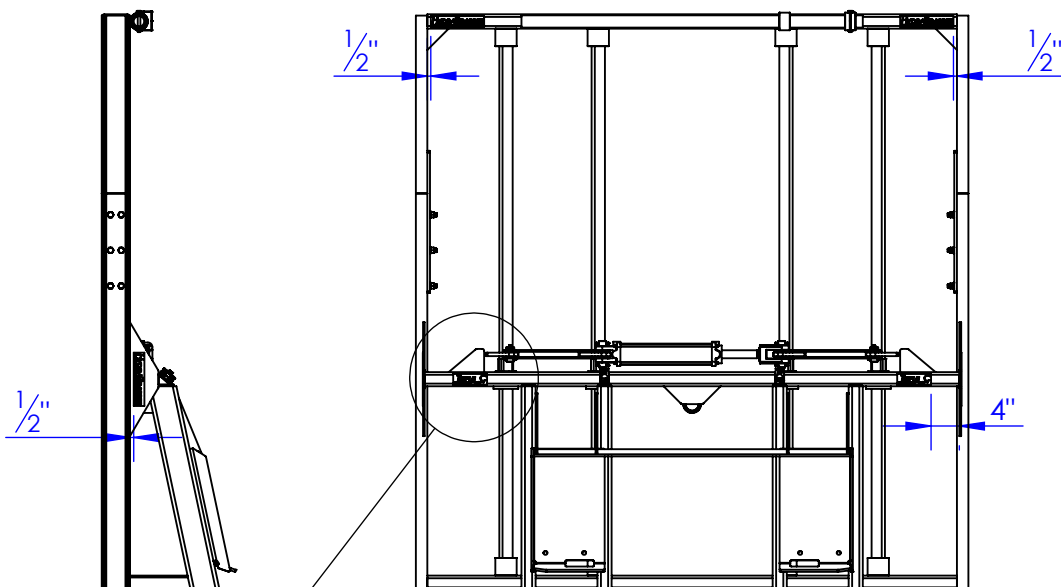
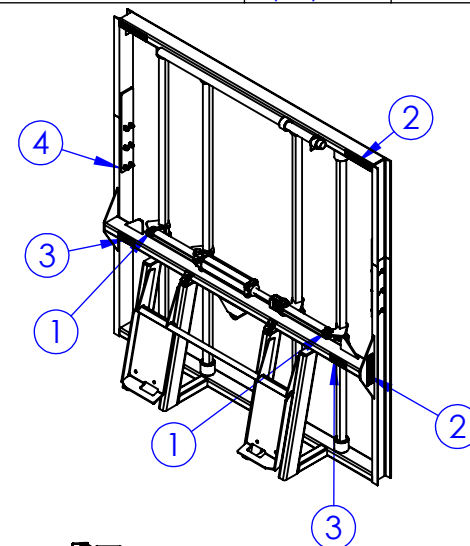
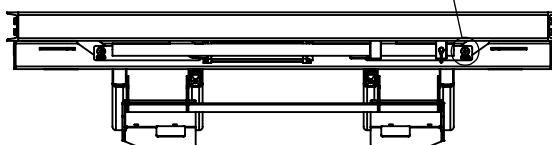
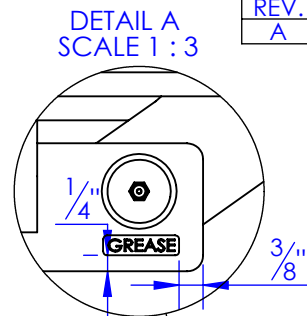
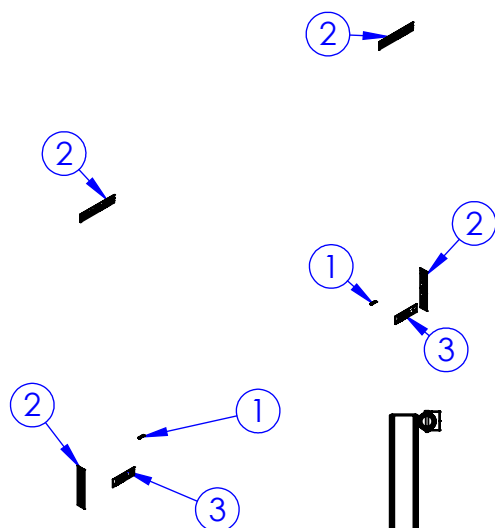


ITEM NO.	PART NUMBER	DESCRIPTION	DRAWING #	QTY.
1	LB-GREASE	GREASE DECAL	STOCK	2
2	LB-HYDRA GRABBER	HYDRA GRABBER DECAL	STOCK	4
3	LB-TRIPLE C	TRIPLE C MFG. DECAL	STOCK	2
4	SUB-HG310	BARE ASSEMBLY GR-8178	50-0202	1

REVISIONS			
REV.	DESCRIPTION	DATE	APPROVED
A	INITIAL RELEASE	1/16/2013	



PROPRIETARY AND CONFIDENTIAL
THE INFORMATION CONTAINED IN THIS DRAWING IS THE SOLE PROPERTY OF TRIPLE C INC. ANY REPRODUCTION IN PART OR AS A WHOLE WITHOUT THE WRITTEN PERMISSION OF TRIPLE C INC. IS PROHIBITED.

DIMENSIONS ARE IN INCHES
TOLERANCES:
FRACTIONAL $\pm 1/16$
ANGULAR: MACH ± 1 BEND \pm
TWO PLACE DECIMAL ± 010
THREE PLACE DECIMAL ± 005

MATERIAL ---
DO NOT SCALE DRAWING

NAME	DATE
DRAWN HEATH	1/17/2013
PART # SUB-HG313	
ASM #	

TRADE DRESS,
HD GR-8178

P.O. BOX 248,
SABETHA, KS 66534

TRIPLE C
INC.

SIZE A	DWG. NO. 50-0203	REV. A
SCALE: 1:27	WEIGHT: 652.63	SHEET 1 OF 1